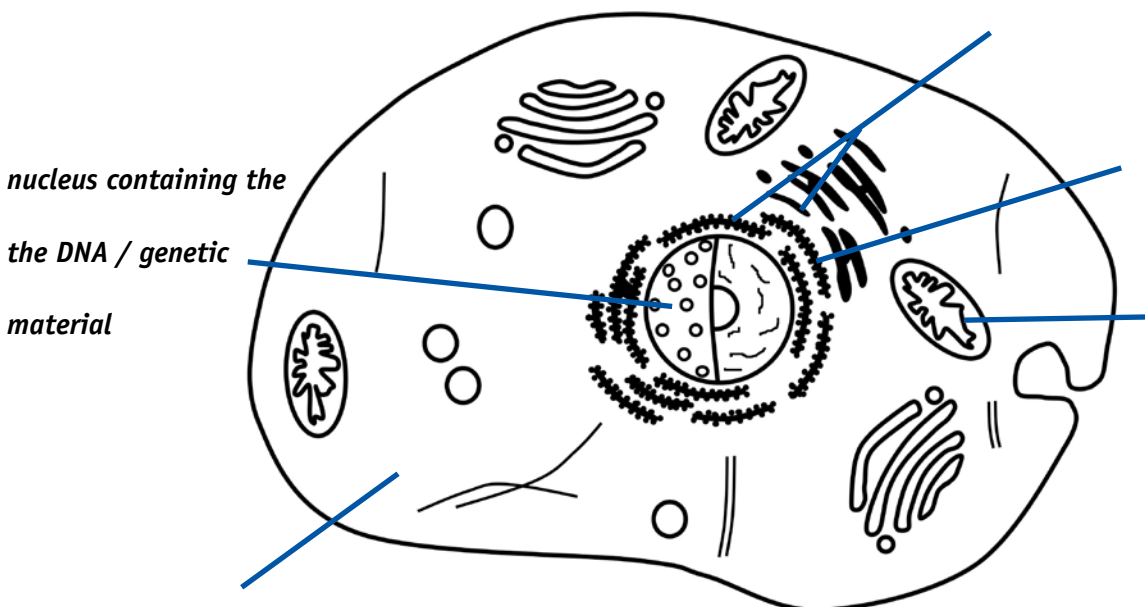


**DNA-Evidence****1a. The human cell.**

Read the text and label the picture of the cell

If you take a look at a human cell under a microscope you can see different cell organelles. They all lie in a liquid called **cell plasma** and they all have different functions. The control center of the cell is located in the so-called **nucleus**. This is also where our **DNA** or **genetic material** is stored. It contains information about e.g. our eye colour or the length of our arms and legs. It unmistakably identifies everyone of us. Other cell organelles are for example the **mitochondria** which are the powerhouses of the cell. The **endoplasmic reticulum** plays an important role for different metabolic processes. Part of it is covered with **ribosomes** which are responsible for the construction of proteins.

**1b. Leaving traces behind.**

Decide whether the following statements are right (✓) or wrong (✗). Correct wrong statements in the text.

- 1. Fingerprints work like an identity card for each person, the pattern is unique.
- 2. Not even identical twins have the same fingerprint patterns.
- 3. If a criminal removes the physical fingerprints from a crime scene, it guarantees that he or she will not get caught.
- 4. Sometimes criminals leave their "biological visiting card" behind, without noticing.
- 5. There is a genetic defect called "Adermatoglyphia" that causes a person to have no fingerprints.
- 6. DNA traces can be helpful to identify the exact age of a person.